

STICK TO THE ORIGINAL INTENTION OF SECURITY
THAT WE CAN LEAD THE FUTURE TREND

REPT BATTERO Energy Co., Ltd.

GLOBAL HEADQUARTERS	R&D CENTER
Add: No. 205, Binhai 6th Road, Airport New Area, Longwan District, Wenzhou City, Zhejiang Province	Add: Dingxin Building, No. 1255 Jinhai Road, Pilot Free Trade Zone, Pudong New Area, Shanghai
E-mail: market@chinarept.com	E-mail: market@chinarept.com
Tel: 0577-86865888	

Manufacturing base: Wenzhou | Jiashan | Liuzhou | Foshan | Chongqing



REPT BATTERO
AUTOMOTIVE POWER BATTERY LEADER

TSINGSHAN 青山实业

TSINGSHAN HOLDING GROUP

Tsingshan holding group combines its rich mineral resources to invest and layout in the new energy field. It always persists in "making life-long stainless steel and creating a sustainable future" mission to push forward the industry and enhance the living quality of mankind. REPTBATTERY enjoys the unique resource integration ability and full industry chain synergy advantages endowed by Tsingshan industry, and becoming one of the fastest growing battery manufacturers in the industry.

Output Ranking Of Crude steel for
Stainless steel Making Worldwide

NO.1

Output Ranking Of Nickel Metals
Worldwide

NO.1

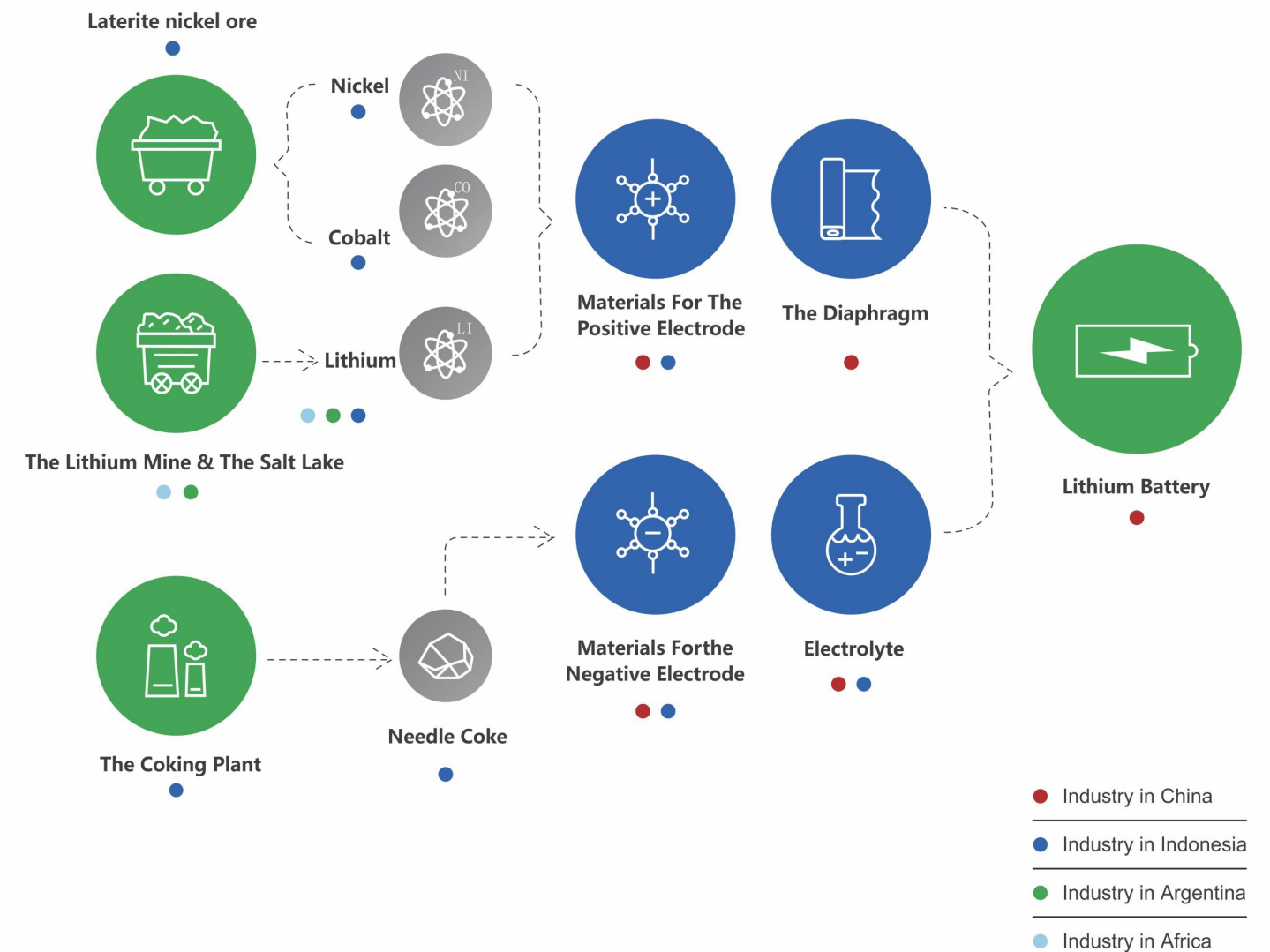
2022 Global Fortune
500 List

NO.238

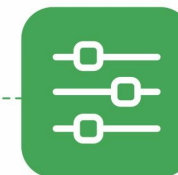
Year 2022 Sales Revenue
368 Billion

368 BILLION

NEW ENERGY INDUSTRY CHAIN OF TSINGSHAN



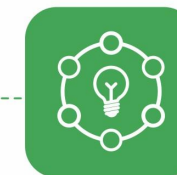
UNIQUE ADVANTAGE



INTEGRATED INDUSTRIAL CHAIN



LONG TERM STABLE AND COST-EFFECTIVE
SUPPLY CHAIN GUARANTEE



RESOURCE INTEGRATION
AND COLLABORATION

REPT BATTERO

REPT BATTERO Energy Co, Ltd. was established in 2017 as the first enterprise invested by Tsingshan Industry in the field of newenergy. REPT mainly engages in the research and development, production, and sales of lithium-ion batteries for power and energystorage systems. The company has a registered capital of 2.161 billion yuan and has research and development centers in ShanghaiWenzhou. ano yiaxino. ts main prooucts are souarealuminum shel blade thium iron ohosonate batteres and temarvy batteries forpassenger cars, commercial vehicles, engineering machinery, and energy storage. In 2022, REPT ranked among the top ten domestic power battery companies in terms of installed capacity. Thec ompany's product technology strength has reached the domestic leadinoevel, coveringpower fields such as passenger cars, commercial vehicles (city buses, locistics vehicles. trucks. etc.), special vehiclesindustrial vehicles, engineering machinery equipment, shipping vessels as well as energy storage fields such as wind and solar powerenergy storage access, grid power storage, backup power supply.



2017

2017.12

The construction of manufacturing base in Wenzhou was started.

2017.10

2017.10 REPT was established.



2019

High specific energy 280Ah-LFP power battery put into production.

155Ah-NCM power battery put into production.

2019.06

The first batch of batter ies for electric logistics vehicles of 4.5 ton was delivered for application.

2019.07

The first batch of electr ic buses of 10.5 m in length was del ivered for application.

2019.08

lernary lithium batteries weredel ivered in batches forapplication in electric passenger vehicles.

2019.11

The Company was accepted as a supplier in the Supplier Management System of DFPV.

2021

High specific energy 280Ah-LFP power battery put into production.

uccessful Development of High Specific Energy 302Ah LFP Power Battery.

2021.04

Aiccepted as a designated supplierin the PSA-OTC project signifying the formal entry of REPT into the global market of power battery.

2021.07

Accepted as a designated suppl ierof PMA project platform by GEELY.

2021.10

Accepted as a designated supplierin the project of Leapmotor.Project Phase II of manufactur ingbase in Wenzhou was official lyput into operation.

2018

2018.10

The production line of 3GW was officially put into operation.



2020

180Wh/kg high energy density power batterydevelopmentand mass production.

High voltage NCM523 batterymass productionand delivery of battery.

2020.04

Lfp batteries with high energy density were delivered to GM of SAIC for application in WULING(E100)

2020.05

The new generat ion NCM batteries were delivered in batches to WELTMEISTER.

2020.06

The application for declaration of buses of 10.5 m in length was completed.

2022.12

The monthly shipment volume ranked the 5th in the industry.

2022

The global release of "Wending Battery" leads the world in terms of volume and energy density.

Successful development of PHEV batterie.

2022.01

Accepted as a designated supplier in both BESTUNE project and MAXUS pro ject.

2022.02

Invested by SAIC and was accepted as a designated supplier in the passenger vehicle project of SAIC.

2022.03

The project SAIC Tsingshan Industry (SAICREPT) with a capacity of 20 GWh was signed.

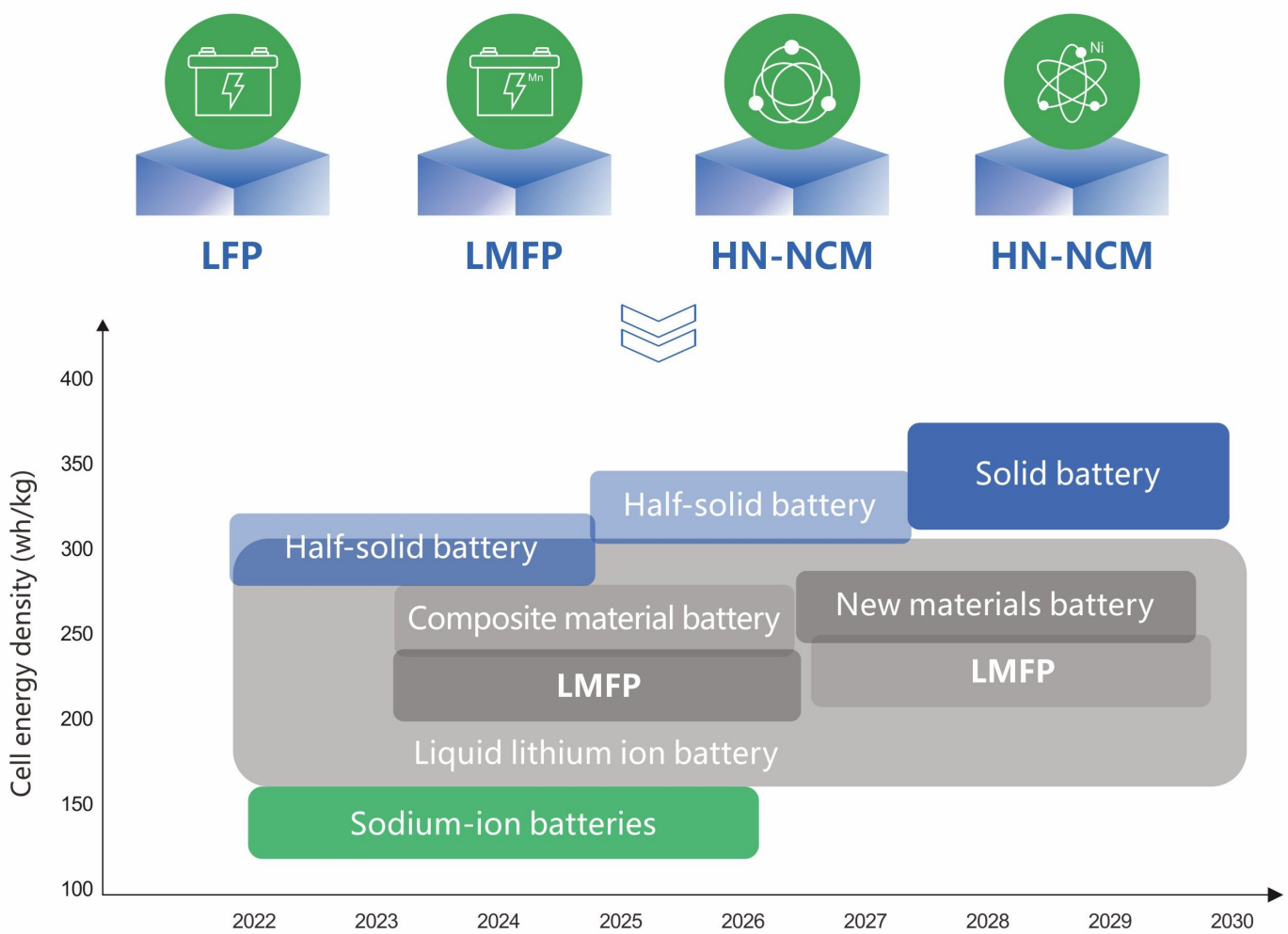
2022.09

monthly shipment exceeding 2 GWh.the Project Phase III in Wenzhou was constructing.

2020.12

Annual sales revenue exceeded RMB 10billion.

R&D ROADMAP

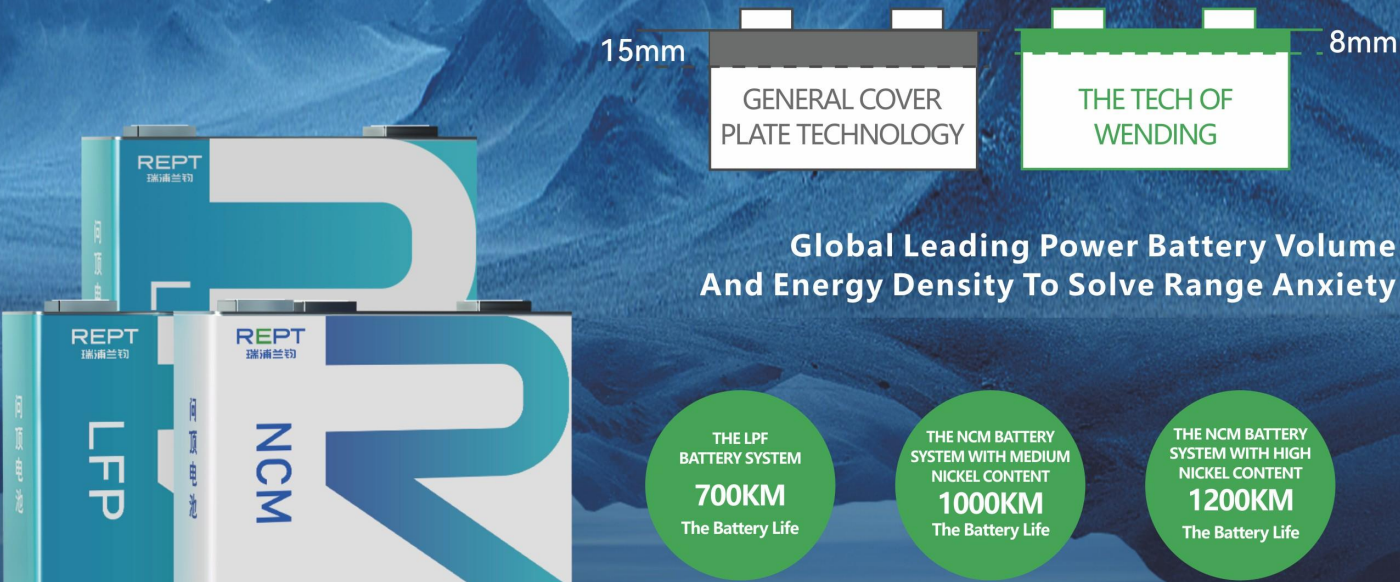


PURE ELECTRICITY	HIGH SPECIFIC ENERGY	HV NCM6/HN NCM8 Gr, Nonaqueous	HV NCM6/HN NCM8 Gr-SiOx, Liquid/SSSB	HN NCM8/9/Pre-Li Gr-SiOx, SSSB	HN NCM9/Pre-Li SiOx/Li metal, SSSB	LNMO/LNO Lithium metal, ASSB
		250-280Wh/kg	270-300Wh/kg	250-400Wh/kg	250-400Wh/kg	400+ Wh/kg
	ECONOMICAL	LFP/Gr	LFP LMFP, LFP composite/Gr	LMFP, LMFP/NCM Gr	LMFP, LMFP/NCM+Pre-Li Gr	
		400-450Wh/L	410-490Wh/L	440-510Wh/L	470+530Wh/L	
FAST CHARGING		HV NCM6 + Gr 250Wh/kg	HV NCM6/8 + Gr 240-250Wh/kg	HV NCM6/8 + Gr-SiOx270Wh/kg		
		2.2C&4.35V	4C&4.35V	5C&4.25V		
		LFP + FC Gr	Spherical LFP + FC Gr	Spherical/composites LFP+ Hard carbon/Gr		
		1.6C	2.2C	4C		
HYBRID	EXTENDED-RANGE		NCM6/Gr 7C/8C	NCM8/Gr 9C		
			510-530Wh/L	530-550Wh/L	580-600Wh/L	
			LFP/Gr 7C	LFP/Gr 8c		
			370-390Wh/L	390-420Wh/L	400-460Wh/L	
		2022	2024	2027	2030	

THE INNOVATIVE NEW TECH OF "WENDING"

Wending Technology integrates cutting-edge technologies such as cell structure technology, process technology and equipment innovation, internal electrochemical characteristics, and stable solid-liquid interface, which can be applied to LFP and NCM batteries to achieve the application of dual high electrodes and continuously enhance the energy characteristics and safety characteristics of batteries.

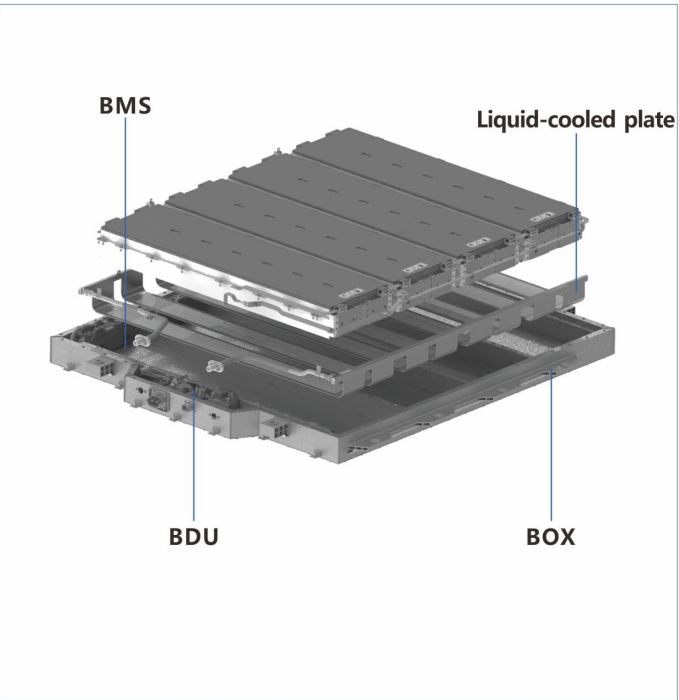
IMPROVE THE SPACE UTILIZATION RATE BY MORE THAN 7%+



PRODUCTS LIST

WENDING	Capacity	158Ah	200Ah(NCM)	320Ah			
	Rated Voltage	3.2V	3.66V	3.2V			
	Energy Density	450Wh/L	650wh/L	420Wh/L			
	Dimension	70*148*112	79*148*105	71*173*204			
	Characteristic	3000cycles	2000cycles	6000cycles			
PHEV&REEV	Capacity	65Ah	54Ah	28Ah	104Ah		
	Rated Voltage	3.2V	3.2V	3.2V	3.2V		
	Characteristic	characteristic (6c)	characteristic (6c)	characteristic (8c)	characteristic (8c)		
BEV	Capacity	132Ah	142Ah	104Ah	166Ah	214Ah (R300)	198Ah (R600)
	Rated voltage	3.2V	3.2V	3.2V	3.2V	3.2V	3.2V
	Energy density	170Wh/kg	180Wh/kg	176Wh/kg	180Wh/kg	190Wh/kg	190Wh/kg
	Dimension	44*220*110	70*148*110	52*148*118	60*194*112	50*300*112	22*574*118
	Characteristic	Fast charging	High SpecificEnergy &Long Life	High specific energy	High specific energy	High specific energy	High specific energy
	Capacity	152Ah(NCM)	190Ah(NCM)	177Ah(NCM)	155Ah (Semi-solid)		
	Rated voltage	3.66V	3.66V	3.66V	3.66V		
	Energy density	250Wh/kg	260Wh/kg	250Wh/kg	250Wh/kg		
	Dimension	50*194*111	79*148*105	79*148*102	79*148*102		
	Characteristic	Ultra fast charging	High Safety &ultraHigh Specific Energy	High Safety &Long Life	High Safety &Long Life		
Commercial vehicles	Capacity	230Ah	302Ah	150Ah			
	Rated voltage	3.2V	3.2V	3.2V			
	Energy density	180Wh/kg	180Wh/kg	180Wh/kg			
	Dimension	54*173*204	71*173*204	36*173*204			
	Characteristic	6000cycles	6000cycles	5000cycles			

CORE TECHNOLOGY ACHIEVES EXCELLENT PERFORMANCE



INDEPENDENT RESEARCH AND DEVELOPMENT IN ALL FIELDS



All key parts of the PACK are independently developed by REPTBATTERO which meet the various professional verification requirements of national mandatory inspections and automobile enterprises

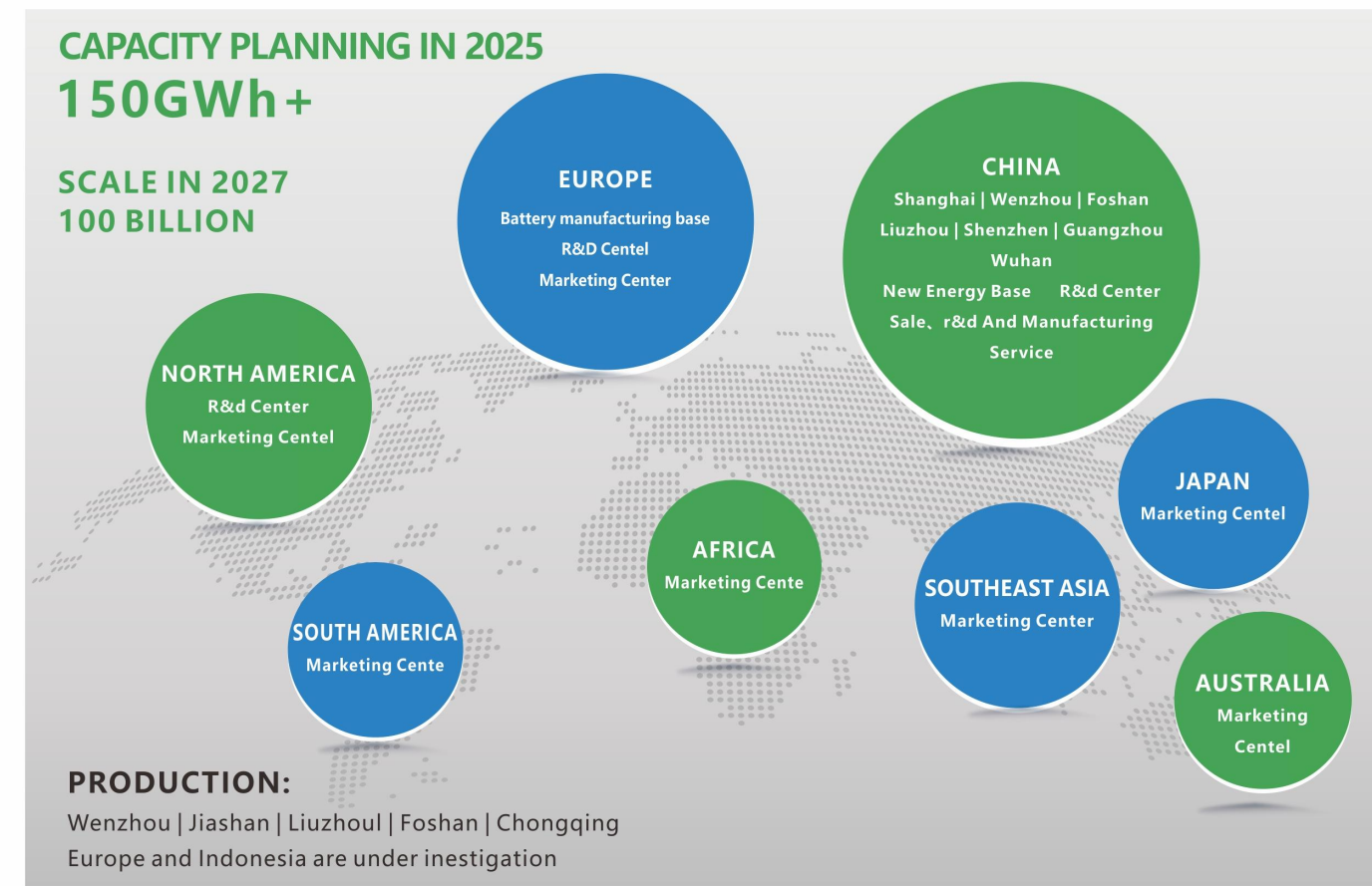
- DETACHABLE CTP TECHNOLOGY FOR EASY MAINTENANCE
- ULTRA BRAIN BMS COVERAGE ON 800V FAST CHARGING PLATFORM
- PACK ADVANCED THERMAL MANAGEMENT TECHNOLOGY

APPLICATION CASES

	RANGE	ASSEMBLED VEHICLE MODEL
PASSENGER VEHICLES	800~1000KM 700~800KM	
	500~700KM	
	400~500KM	
	200~400KM	
COMMERCIAL VEHICLES AND OTHER APPLICATION CASES		

Stay tuned for more supporting models and application cases

GLOBAL INDUSTRIAL LAYOUT



▲ The Production Base in Wenzhou



▲ The Production Base in Jiashan



▲ The Production Base in Foshan



▲ The Production Base in Liuzhou

SUSTAINABLE DEVELOPMENT

ESG MEASURES



WASTE DISCHARGE AND UTILIZATION



BATTERY RECYCLING



PRODUCTION SAFETY AND HEALTH OK STAFFS



SUPPLY CHAIN TRECEABILITY MANAGEMENT



ENERGY USE



CORPORATE SOCIAL RESPONSIBILITY SYSTEM

ESG ACHIEVEMENT

APPROVED 2022 NATIONAL GREEN FACTORY

SELECTED INTO THE LIST OF GREEN AND LOW-CARBON FACTORY IN ZHEJIANG PROVINCE IN 2021

PASSED THE EVALUATION OF "WASTE FREE PLANT" IN ZHEJIANG PROVINCE IN 2021

OBTAINED THE CERTIFICATION OF ISO45001:2008-OCCUPATIONAL HEALTH AND SAFETY MANAGEMENT SYSTEM

WON THE BRONZE MEDAL OF ECOVADIS CORPORATE SOCAIL RESPONSIBILITY, AN INTERNATIONAL BUSINESS SUSTAINABILITY SCORING PLATFORM

